

## SHARE INFORMATION

### Share Information (As of March 31, 2017)

Number of shares authorized	150,000,000
Number of shares issued	68,638,210 (Including 4,496,099 shares of treasury stock)
Trading unit	100 shares
Number of shareholders	5,795 shareholders (down 251 year on year)
Listing exchange	First Section of the Tokyo Stock Exchange
Securities code	6457
Administrator of shareholder registry	Mitsubishi UFJ Trust and Banking Corporation

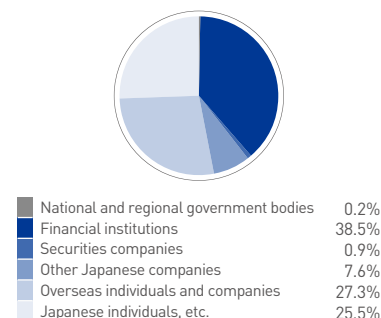
#### Major shareholders

Shareholder	Number of shares held (Thousands of shares)	Holding ratio (%)
Nippon Life Insurance Company	3,427	5.0
The Master Trust Bank of Japan, Ltd. (Trust account)	3,401	5.0
Japan Trustee Services Bank, Ltd. (Trust account)	2,747	4.0
STATE STREET BANK AND TRUST COMPANY 505223	2,302	3.4
Sumitomo Mitsui Banking Corporation	2,100	3.1
GLORY Group Employees' Stock Ownership Association	2,080	3.0
Japan Trustee Services Bank, Ltd. (Trust account 9)	2,007	2.9
Tatsubo Fashion Co. Ltd.	1,500	2.2
CBNY-GOVERNMENT OF NORWAY	1,349	2.0
JP MORGAN CHASE BANK 385174	1,297	1.9

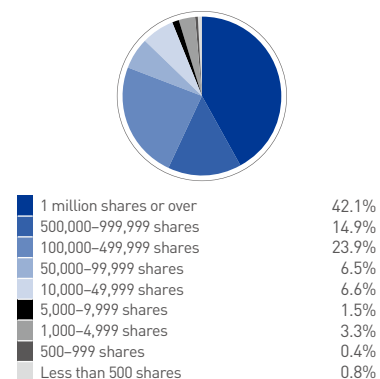
In addition to the above, the Company holds 4,496,099 shares of treasury stock.

#### Shareholder distribution

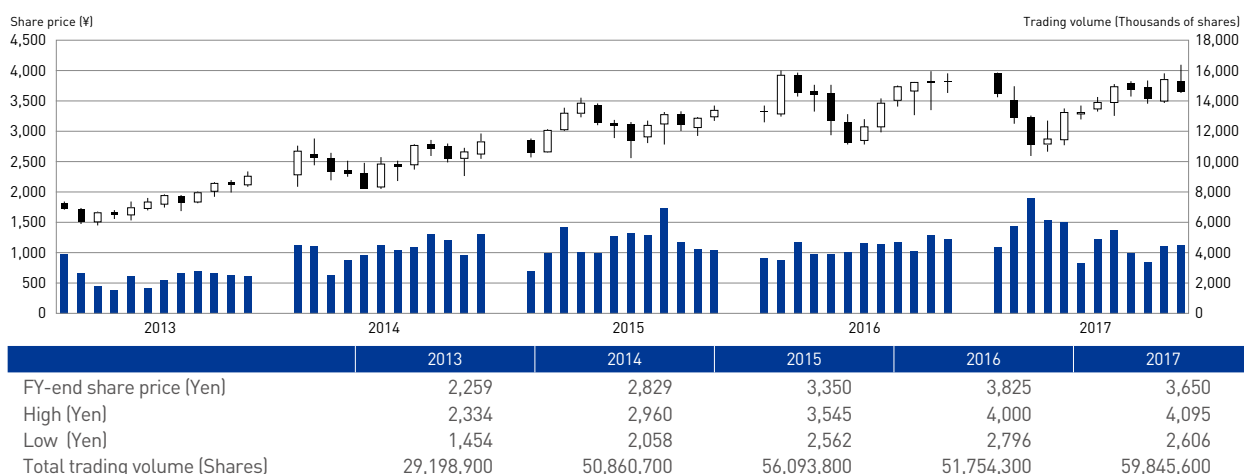
##### Distribution by ownership of shares



##### Distribution by number of shares



### Trends in Share Price and Trading Volume (Years ended March 31)



\* The graph, share price and total trading volume from the table above are from Osaka Securities Exchange before July 15, 2013, and from Tokyo Stock Exchange after July 16, 2013. (The cash equity market of the Osaka Securities Exchange was integrated into the Tokyo Stock Exchange on July 16, 2013.)